

Bureau of Ocean Energy Management, Regulation and Enforcement

Update on Offshore Wind Energy Activities for the New England Fishery Management Council

Danvers, Massachusetts

September 27, 2011

Presentation Overview

1. Bureau of Ocean Energy Management, Regulation and Enforcement (BOEMRE) Reorganization
2. Review of OCS Wind Process
3. Update on Process Activities in New England
4. Update on Process Activities in the Mid-Atlantic
5. Update on BOEMRE Environmental Studies Program

BOEMRE Reorganization

As of October 1, 2011:

- Bureau of Ocean Energy Management (BOEM) will manage leasing and related actions
- Bureau of Safety and Environmental Enforcement (BSEE) will manage operations on issued oil and gas leases (inspection and enforcement)
- The OCS renewable energy program will be managed entirely by BOEM

BOEMRE's OCS Wind Process

Four stages:

1. Planning and Analysis
2. Leasing
3. Site Assessment
4. Commercial Development

Stage 1: Planning and Analysis

- Engage Intergovernmental Task Force, stakeholders, and public
- Publish Planning Notices
 - Request for Interest (RFI)
 - Call for Information and Nominations (Call)
- Announce Area Identification (Wind Energy Areas)
- Conduct environmental compliance and consultation

Stage 1: Planning and Analysis

- Planning and analysis may be started by a developer submitting an unsolicited request or by BOEMRE
- In either case BOEMRE will issue public notices to gather information on an area and to determine whether competitive interest exists
- After publishing an RFI or Call and considering results, BOEMRE will decide whether to proceed competitively or noncompetitively

Stage 2: Leasing

- OCS wind leases may be issued through a competitive or noncompetitive process
- Throughout the leasing stage BOEMRE continues to engage with the task force, stakeholders, and the public
- Publish Notices
 - Determination of No Competitive Interest (Noncompetitive)
 - Proposed and Final Sale Notices (Competitive)
- Issue Lease(s)
 - Negotiate Lease (Noncompetitive)
 - Hold Lease Auction (Competitive)

Stage 3: Site Assessment

- Lease provides a 5-year period to collect site-specific data:
 - Informs preparation of the lessee's construction and operations plan (COP)
 - May include archaeological, biological, geophysical, geotechnical, and shallow hazard surveys
- BOEMRE conducts environmental and technical reviews of the lessee's site assessment plan (SAP)
 - Submitted for planned bottom-founded data collection facilities (e.g., meteorological towers or buoys)

Stage 4: Commercial Development

- Lease provides a 25-year period to construct facilities and generate electricity
- Lessee submits construction and operations plan (COP) that describes
 - Overall site investigation results
 - Offshore and onshore support
 - Any proposed mitigation and monitoring and lease stipulation compliance
 - Design, fabrication, installation, and operations concepts
 - Decommissioning and site clearance concepts
- BOEMRE prepares an Environmental Impact Statement (EIS) and conducts other environmental and technical reviews and consultations
- Lessee must prepare a Navigational Risk Assessment
- After 25 years of operation, lease expires and decommissioning is required unless a renewal is granted

Opportunity for Public Comment

- All four stages provide for stakeholder engagement and public comment
 - Stakeholder meetings
 - Intergovernmental task force meetings:
public Q&A sessions
 - NOI to prepare an EA or EIS
 - Scoping meetings for EISs
 - Hearings and comment periods for draft EISs

Update: Maine

- Held task force meetings in September and November 2010
- No planning notices issued to date
- Now working with the new Governor's administration to reconstitute the Maine task force

BOEMRE's Maine Contact: Aditi Mirani
703.787.1752; aditi.mirani@boemre.gov

Update: New York

- Held task force meeting in November 2010
- No planning notices issued to date
- New York Power Administration (NYPA) submitted an unsolicited request for a commercial wind lease 13 nautical miles south of Long Island
- Will convene a task force meeting to begin planning and analysis after review of NYPA's lease request

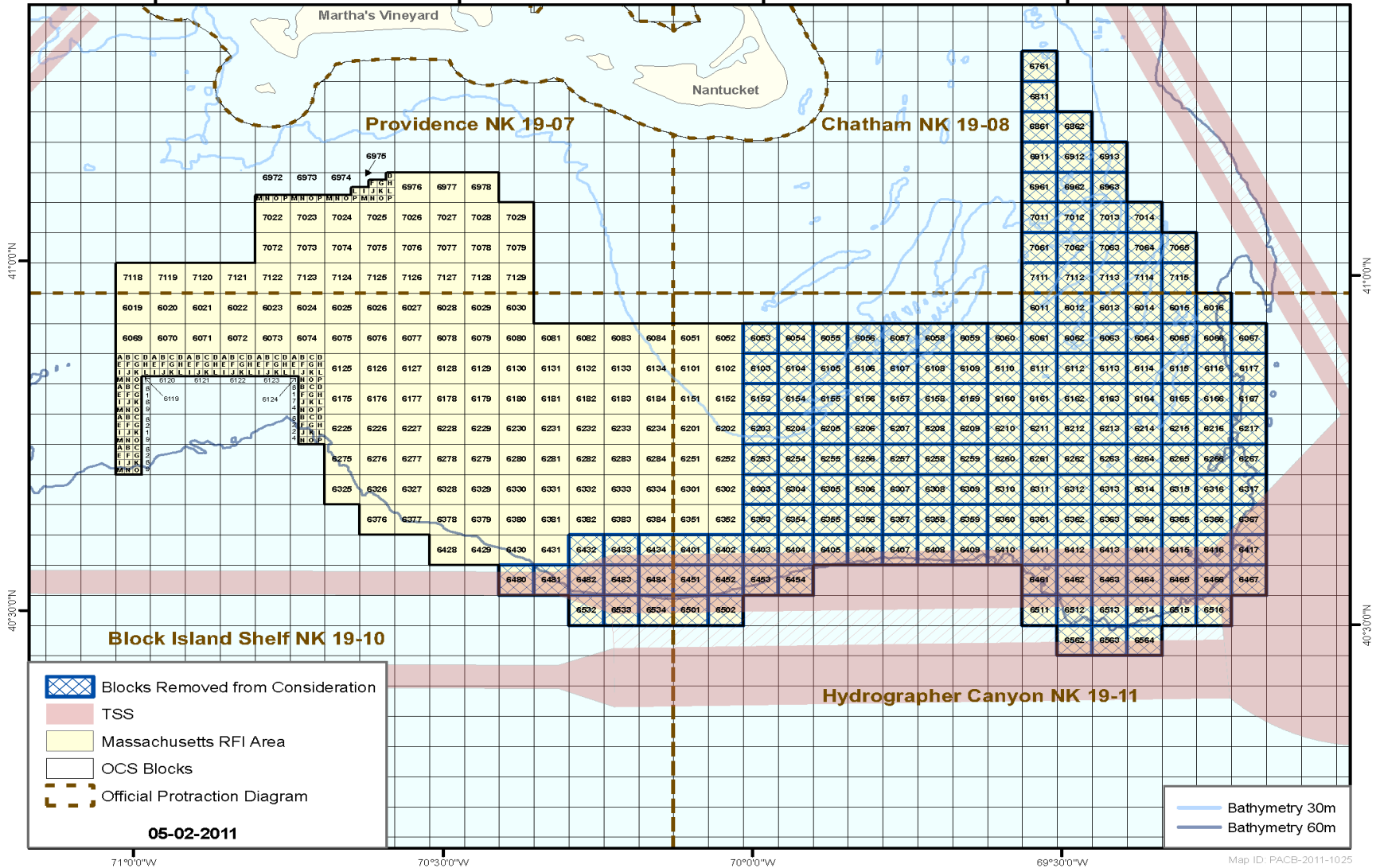
BOEMRE's New York Contact: Jessica Bradley
703.787.1730; jessica.bradley@boemre.gov

Update: Massachusetts

- Held 5 task force meetings since November 2009
- Published RFI in December 2010. Received 9 expressions of interest in 10 areas and about 250 comments on resources, competing uses and other issues
- Excluded blocks east of 70° longitude as requested by commercial fishing interests and the Commonwealth

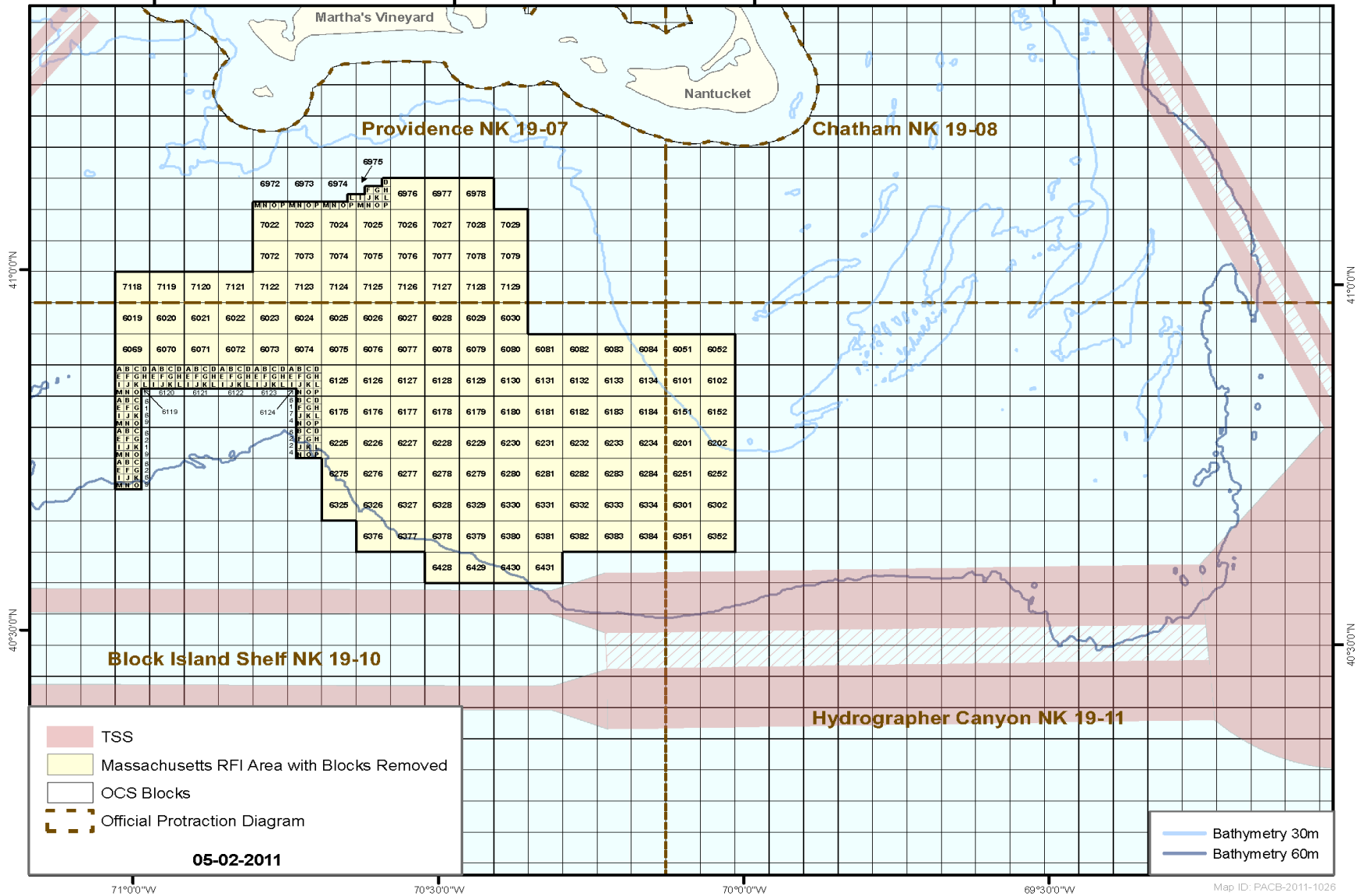
Update: Massachusetts

Massachusetts Request for Interest - Blocks Removed from Consideration (1 of 2)



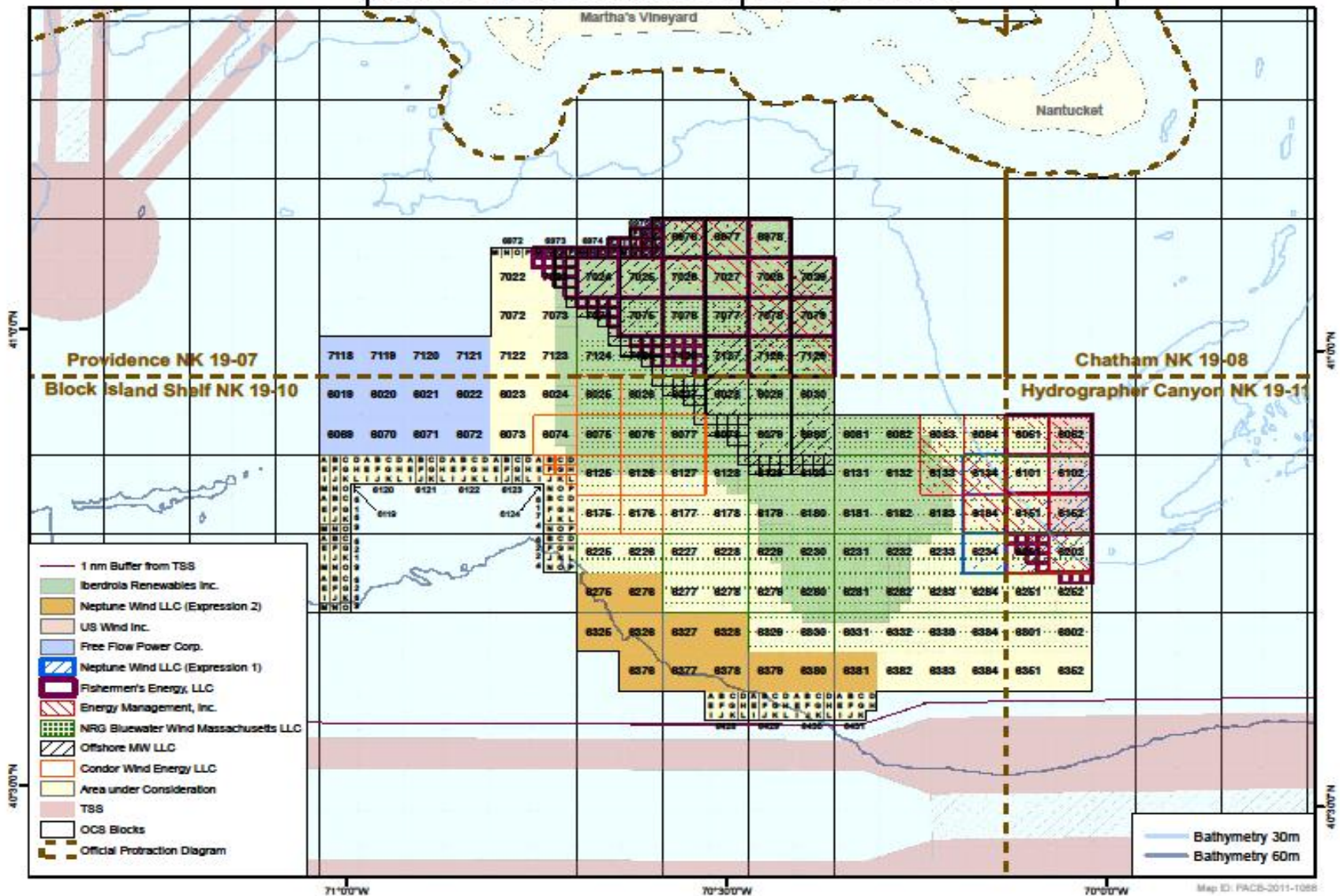
Update: Massachusetts

Massachusetts Request for Interest - Remaining Blocks Under Consideration (2 of 2)



Update: Massachusetts

MA RFI Responses within Area under Consideration



Update: Massachusetts

- Will issue a Call and a Notice of Intent (NOI) to prepare an Environmental Assessment (EA)
- Plan to hold a task force meeting in October 2011
- There will be 45-day comment period for the Call and NOI
- Will schedule public information meetings in Boston, New Bedford, and Martha's Vineyard concluded last week.

BOEMRE's Massachusetts Contact: Jessica Bradley
703.787.1730; jessica.bradley@boemre.gov

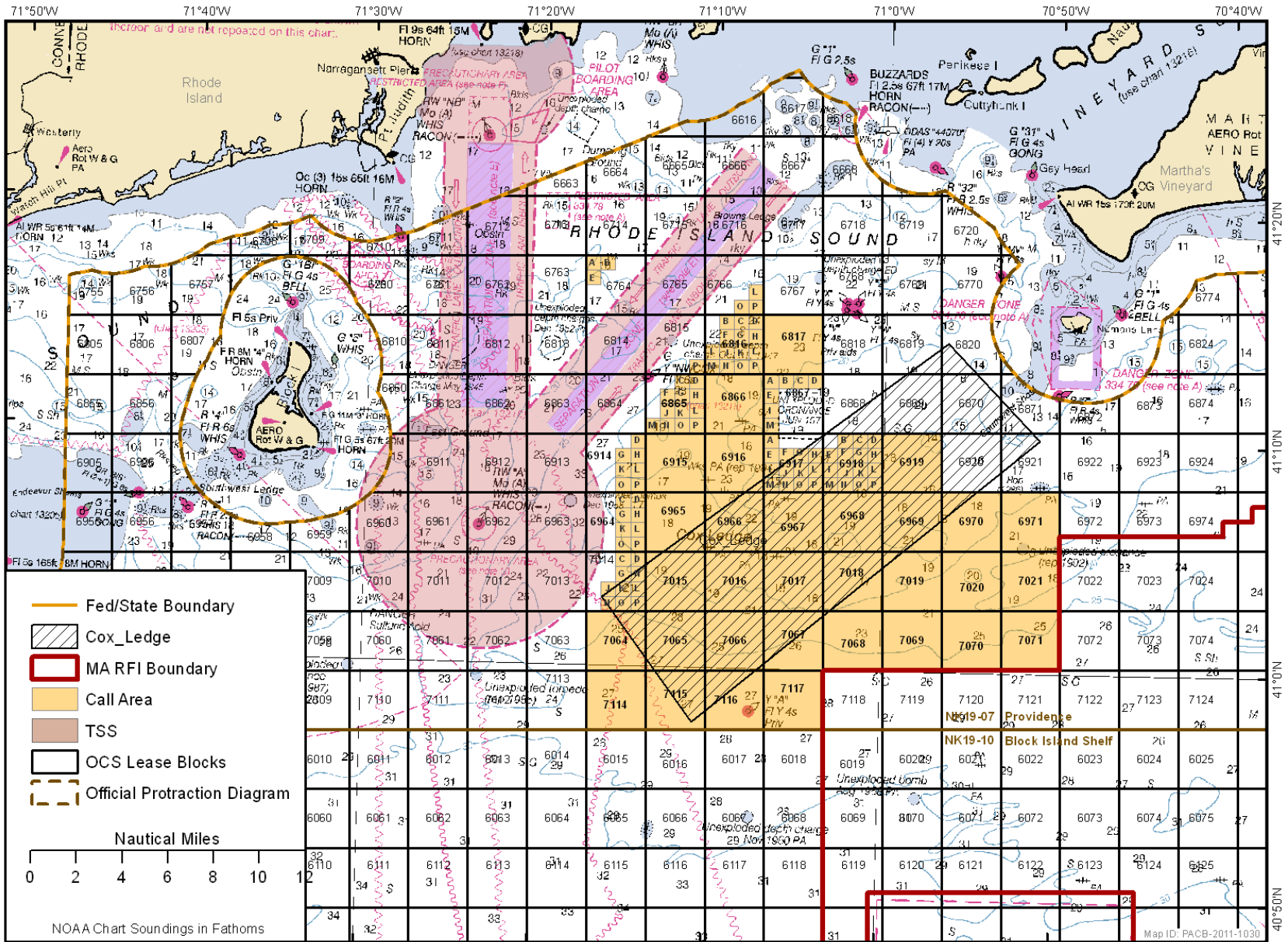
Update: Rhode Island – Massachusetts Area of Mutual Interest (AMI)

- Held RI task force meeting in November 2009
- Governors of RI and MA agreed on AMI in July 2010
- AMI is an area of the OCS south of RI and MA that the two states identified for joint consideration of wind energy leasing and development
- AMI does not include the blocks to the east off Massachusetts that are subject to a separate planning process

Update: RI-MA AMI

- Held joint RI-MA task force meetings in December 2010 and May 2011
- BOEMRE developed the Call area in joint consultation with the RI and MA Task Forces
- BOEMRE issued a Call and NOI to prepare an EA on August 18
- 45-day comment period ends on October 3
- Held public information meetings in Narragansett, New Bedford, and Martha's Vineyard

Rhode Island and Massachusetts Call Area



- Fed/State Boundary
- Cox_Ledge
- MA RFI Boundary
- Call Area
- TSS
- OCS Lease Blocks
- Official Protraction Diagram

Nautical Miles

0 2 4 6 8 10 12

NOAA Chart Soundings in Fathoms

Map ID: PACB-2011-1030

RI – MA Call and NOI: Next Steps

- Plan to complete Area Identification (identify a Wind Energy Area, WEA) after considering information from the Call and NOI and consulting with the task forces
- AI/WEA forms the basis for the proposed action to be analyzed in the EA
- Will formulate and analyze reasonable alternatives to the proposed action (e.g., mitigations, areal exclusions) in the EA
- Will complete consultations required by other laws

EA Scenario

- BOEMRE will develop a scenario consisting of routine and non-routine activities expected as a result of commercial wind lease issuance in the AMI
- Routine activities will include:
 - Site characterization surveys (shallow hazards, geological & geophysical, geotechnical, archaeological, biological)
 - Site assessment activities (installation of met masts and buoys)
- Non-routine activities will include:
 - Severe storms
 - Vessel collisions and allisions
 - Spills of oil or other pollutants

Analysis of Socioeconomic Conditions

- Archaeological resources
- Commercial and recreational fishing activities
- Recreational resources
- Demographics and employment
- Environmental justice
- Land use and coastal infrastructure
- Other uses of the area

Analysis of Physical and Biological Resources

- Physical Resources
 - Air quality
 - Water quality
- Biological Resources
 - Coastal habitats
 - Benthic resources
 - Fish and essential fish habitat (EFH)
 - Marine mammals
 - Sea turtles
 - Birds and bats

Alternatives that May Be Analyzed

- Geographic Alternatives
- Fishing Conflicts Alternatives
- Timing/Seasonal Alternatives
- Ship/Vessel Conflicts Alternatives
- No Action Alternative

Analysis of Cumulative Impacts

- Past, present, and reasonably foreseeable future actions:
 - Onshore development
 - Existing port and waterway usage
 - Maritime traffic
 - Other renewable energy activities (e.g., in the Massachusetts area to the east)

EA Findings

- If the EA finds that lease issuance and site characterization and assessment activities will have significant impacts, BOEMRE will undertake preparation of an EIS
- If the EA results in a finding of no significant impact (FONSI), BOEMRE may issue commercial wind leases and approve SAPs based on that finding

Comments Due By Oct 3

- The Call and NOI are available online at:

www.boemre.gov/offshore/RenewableEnergy/StateActivities-RhodeIsland.htm

- You may email comments to www.regulations.gov. In the entry entitled “Enter Keyword or ID,” enter BOEM 2011-0063. Then click “search” and follow further instructions
- You may send comments by regular mail or hand delivery to:

Program Manager

Office of Alternative Energy Programs (MS 4090)

Bureau of Ocean Energy Management, Regulation and Enforcement

381 Elden Street

Herndon, Virginia 20170

Update on Process in Mid-Atlantic

- Comment period on the draft EA closed on August 11
- Draft EA and comments are posted at: www.regulations.gov; keyword: BOEM-2011-0053
- Targeting completion by October
- Anticipating publishing Calls for Maryland and Virginia this fall
- Initiating noncompetitive leasing process off Delaware this fall

Update on Environmental Studies Program

- On July 7, 2011, BOEMRE announced the completion of the study “Effects of EMFs From Undersea Power Cables on Elasmobranchs (Sharks and Rays) and Other Marine Species.” Final report available at:
<http://www.gomr.boemre.gov/PI/PDFImages/ESPIS/4/5115.pdf> In situ follow-up studies are planned.
- Workshops with fishermen and wind energy developers to develop BMPs and mitigation measures are planned for 2012.
- A complete list of Renewable energy studies is available at:
<http://www.boemre.gov/eppd/sciences/esp/RenewableEnergyResearch.htm>

Questions?

RI – MA AMI Call

Rhode Island and Massachusetts Call Area

